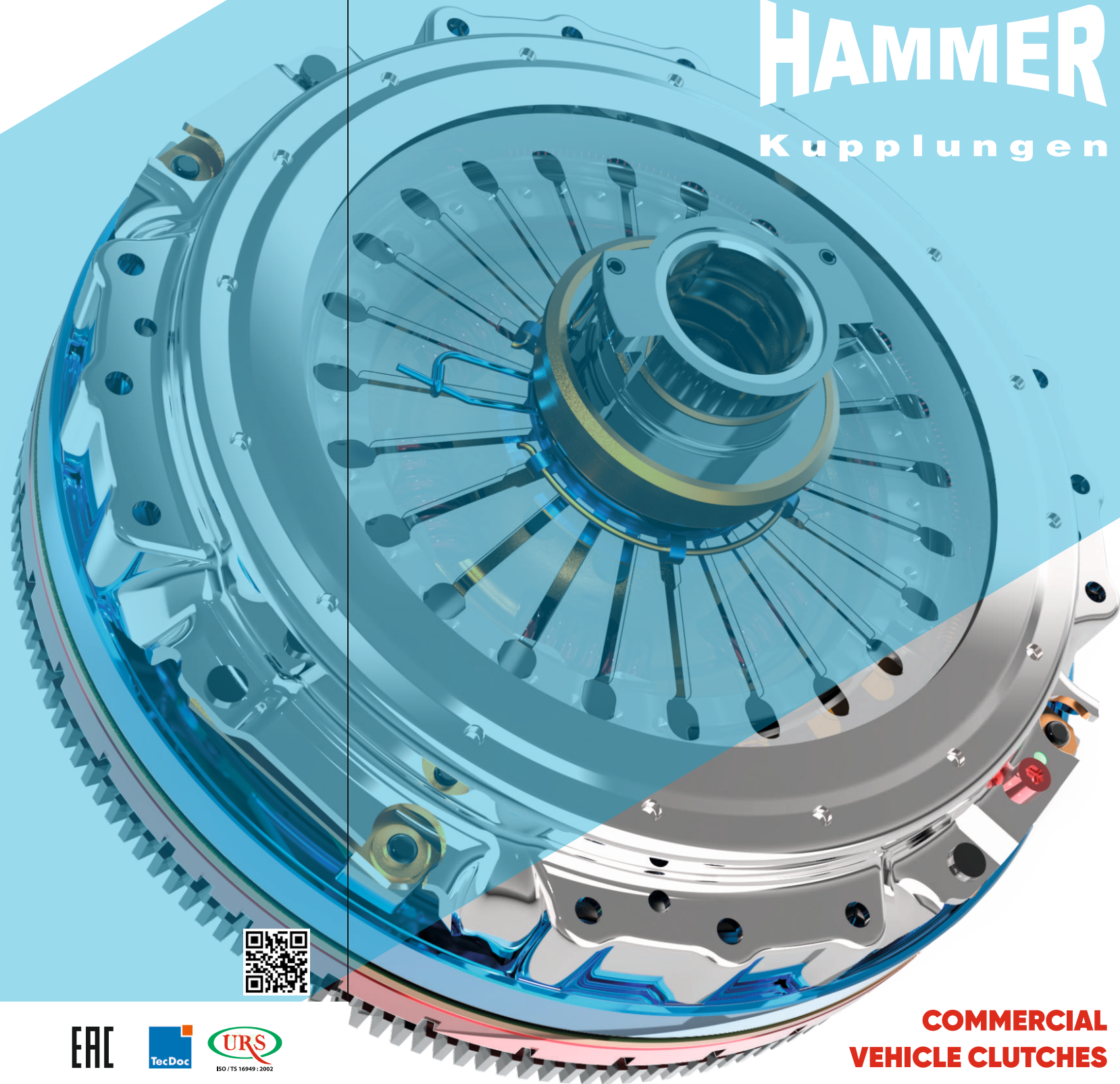


HAMMER

Kupplungen

HAMMER

Kupplungen



① Hammer Clutch UK LTD
Address: Hammer Clutch UK LTD Unit 19
Maple Leaf Industrial Estate Bloxwich Lane
Walsall West Midlands WS2 8TF
② Phone: +44 01922 720910
③ Fax: +44 0870 170 9766
④ info@hammerclutch.co.uk

① Hammer Kupplungen Russian Federation
195220, Санкт-Петербург, Улица Гжатская,
дом 22 корпус 4, кв. 523
② Phone: +7 931 589 07 47
③ o.inon@donmezclutch.com

① Dönmez Debriyaj Halilbeyli OSB Mh.
Ege Cd. Başıyurdu Org. San. Böl. No: 6
35730 Kemalpaşa/Izmir – Izmir/Turkey
② Tel: +90 232 376 87 66
③ Fax: +90 232 376 89 99
④ info@hammerkupplungen.com



**COMMERCIAL
VEHICLE CLUTCHES**

www.hammerkupplungen.com • www.donmezdebriyaj.com.tr



Dönmez Clutch presents their products that have been prominent with its quality in Turkish market since 1980, as “Hammer Kupplungen” brand, which assures their customers, to global market. Hammer Kupplungen has been producing clutch pressure plate, clutch disks, clutch bearing, flywheel and turbocharger to heavy vehicles and light commercial vehicles in the automotive market where the world's giants are, and adds value to their production with their pre-sales and after-sales services.

Hammer Kupplungen, whose brand journey successfully continues, providing their service, which Dönmez Clutch is the sole and leading actor inland, by exporting to



more than eighty country especially United Kingdom and Continental Europe. Annually 200 thousand clutch set (pressure plate, disk, bearing and flywheel) producing Dönmez Clutch, in addition to, exporting their %50 of the production to global market as Hammer Kupplungen, carries on their activities in the new factory with renewed production lines since September 2020.

Dönmez Clutch, who makes functional, special and integrated production with genuine designs and experience in the business ecosystem where innovative ideas and competitive environment gain momentum day by day, continues to achieve new successes in the global market each passing day with Hammer Kupplungen brand.



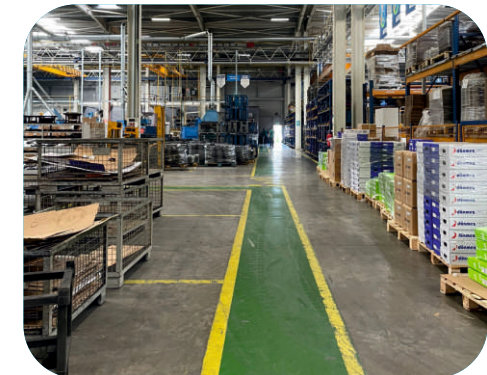


**WE PRODUCE
INNOVATION
BY PASSION.**

MILESTONES

- 1980** First Establish Date
- 1986** First Investment for Clutch Production
- 1988** First Production (350 mm Mercedes Clutch Disc)
- 1993** First Export
- 1995** New Plant Investment (A.O.S.B.)
- 1998** First 430mm Products and Export Brand Hammer Kupplungen Established
- 1999** ERP Planning and Production Programme
- 2004** First Release Bearing Production
- 2007** TS/ISO 16949 Certification for OEM
- 2008** First OEM Sales (BMC-MAZ-YAMZ)
- 2010** First ISO 14001 and OHSAS 18001 Certificates-
First Flywheel Production
- 2012** 430 mm Xtend Set Kit Production
- 2013** Kamaz OEM Sales
- 2014** First Turbocharger Production
- 2015** R&D Center
- 2016** Ford OEM Sales
- 2017** Hidromek OEM Sales
- 2018** Anadolu Isuzu OES(ANT) / Otokar OES Sales
- 2020** Production started in our new factory

HAMMER
Kupplungen

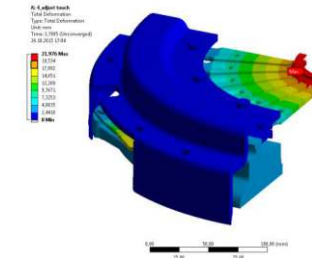
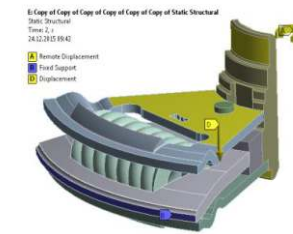
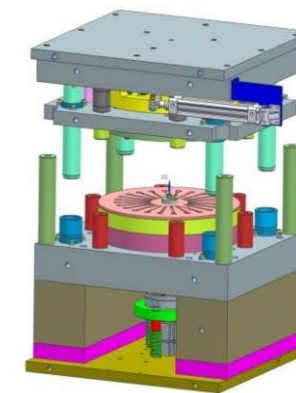
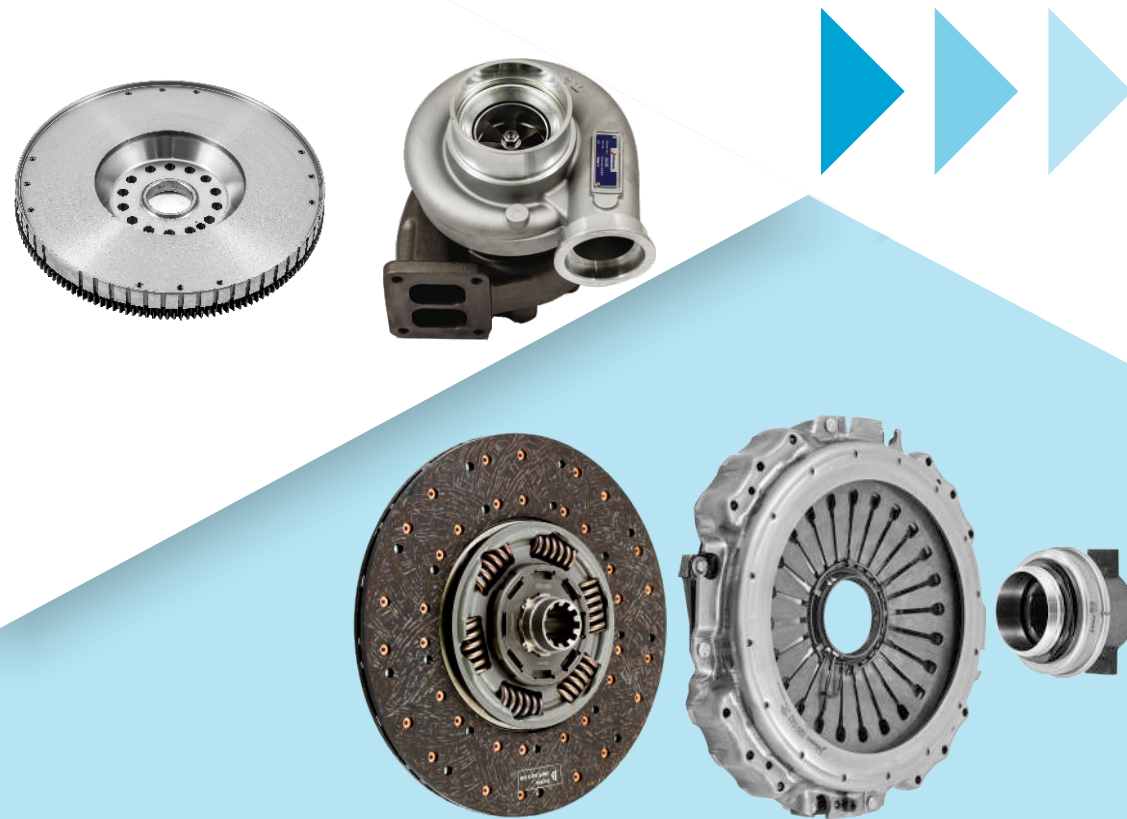




Products

Dönmez provides optimal solutions with its products

- Customer specific solutions
- Latest market trends product
- Ø 215 mm–430 mm clutch application
 - Compatible with leading truck manufacturers
- Mercedes Benz, MAN, Scania, DAF, Iveco, Volvo and Renault Truck etc
- Flywheel
- Turbo charger
- LCV and HCV segment wide range products

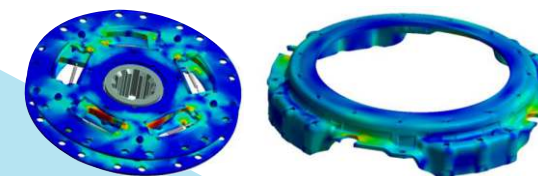


HAMMER
Kupplungen

Research & Development

R&D Center assures customer oriented solutions

- Computer Aided Engineering
- Integrated Design Capability
 - High-Tec technology test systems
- Design own molds, dies & tools
- Design right product first time
- Choosing optimum materials
- Expert R&D Personnels (Engineers, Technicians, Supporters)
- Total 600 Molds



ANSYS

PLM Software
SIEMENS
NX

AUTODESK
AUTOCAD



Research & Development

Laboratory & Test Equipment

R&D Laboratory - Test Equipment

- Cover Assembly Static Durability Test
- Release Bearing Assembly Durability Test
- Disc Torque Capacity Measuring
- Dynamometer
- Burst Test
- Dual Mass Flywheel Torque-Hysteresis Test Machine

End of Line (EOL) -Test Equipment

- Cover Assembly Performance Measuring
- Clutch Disc Cushion Deflection (Flex) Test Machine
- Clutch Disc Freemovement (Drag Torque) Test Machine



Research & Development

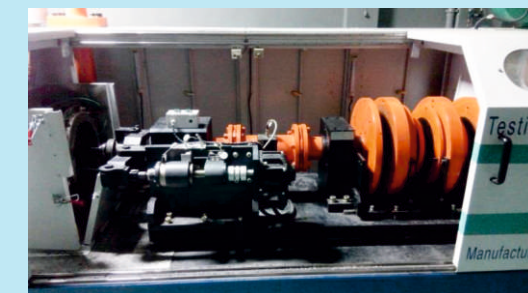
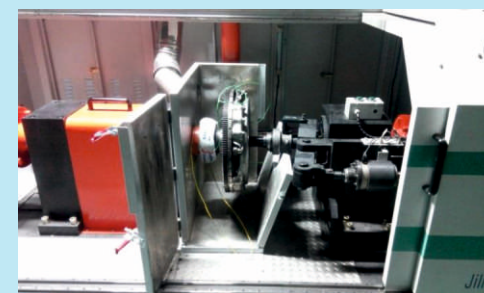
Clutch DYNO Test Machine

Engine Power 550 kW

Torque Capacity : 5.000 Nm

Test Capabilities ;

- Thermal Load Test
- Wear Proof Test
- Static Friction Test
- Sliding Friction Test
- Thermal Shock Test





QUALITY MANAGEMENT SYSTEM

Test Equipments

Clutch Cover Assembly
Performance Control Machine



Clutch Driven Disc Assembly
Cushion Deflection Control Machine



Clutch Cover Assembly Durability
Test Machine



Clutch Driven Disc Assembly
Torque and Hysteresis Control Machine



Clutch Driven Disc Assembly
Free movement (Drag Torque) Test Machine



Clutch Release Bearing
Assembly Durability Test Machine



QUALITY MANAGEMENT SYSTEM

